

Air Visual Pro

Indoor Air Quality Monitoring

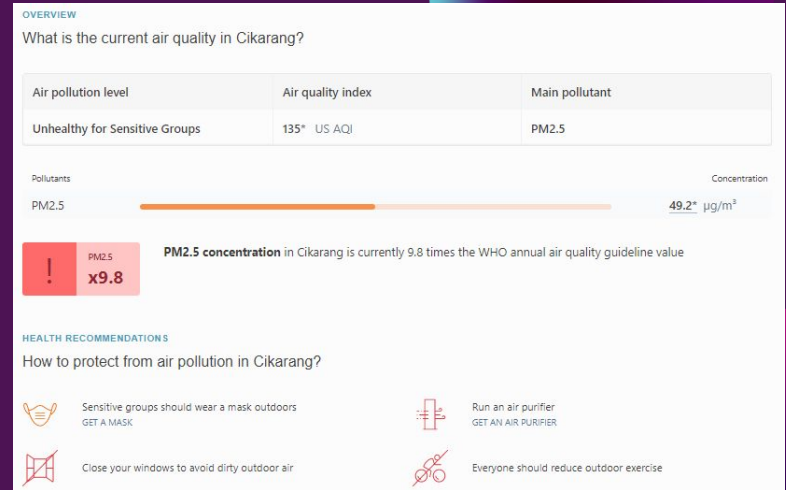


Author

ENVIRONMENTAL ENGINEERING - PRESIDENT UNIVERSITY

Background

Based on Air Quality Index in Cikarang, it indicates unhealthy for sensitive group with main pollutant is PM 2.5. It also suggested to close the window and get air purifier or also mean it's possible to indoor air quality damaged by outdoor air quality.



Sc: Iqair.com

IQ Air In Cikarang

World Air Quality Community For Home For Business News Support

City: World > Indonesia > West Java > Cikarang

Air quality in Cikarang

Air quality index (AQI) and PM2.5 air pollution in Cikarang

Last update at: 10:00, Aug 26

38.5K people follow this city

US AQI LIVE AQI INDEX
117* Unhealthy For Sensitive Groups

OVERVIEW
What is the current air quality in Cikarang?

Air pollution level	Air quality index	Main pollutant
Unhealthy for Sensitive Groups	117* US AQI	PM2.5

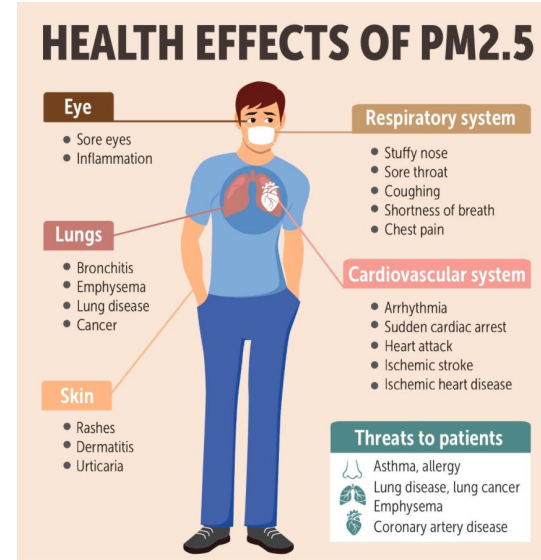
CIKARANG AIR QUALITY MAP
Real-time Cikarang air pollution map

What is the Effect?

Health effects associated with indoor air pollutants include:

- Irritation of the eyes, nose, and throat.
- Headaches, dizziness, and fatigue.
- Long term: Respiratory diseases, heart disease, and cancer.

Sc: EPA GOV

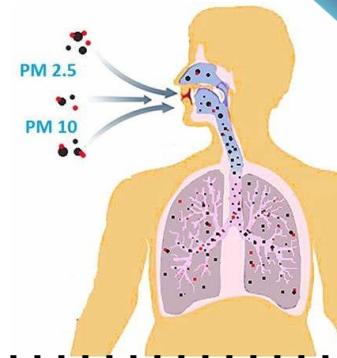
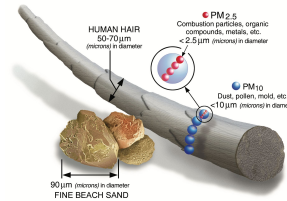


AirVisual Pro

Measures air pollution by combining laser technology and AI so AirVisual Pro is able to deliver immediate and accurate air quality level, as well as intuitive recommendations.



PM 2.5



What is PM 2.5?

PM_{2.5} refers to particulate matter in the air with a diameter of 2.5 micrometers or less. Due to its size, PM_{2.5} is considered the most hazardous pollutant to human health as it can be absorbed into the bloodstream via the lungs.

Sources

Outdoor: vehicles, wood burning, industrial activities and other forms of combustion.

Indoor: leaky windows and doors, stove top cooking, fireplaces, incense, cleaning products and fragrances.

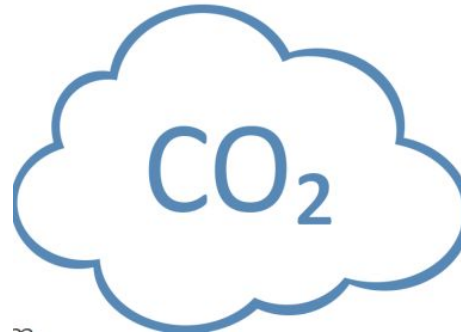
CO₂

What is CO₂?

CO₂ (carbon dioxide) is a naturally occurring, odorless gas that occurs outdoors in concentrations between 380 (rural) and 500 ppm (urban). Because humans exhale carbon dioxide (CO₂), concentrations of CO₂ in occupied indoor spaces are higher than concentrations outdoors. High CO₂ means you need fresh air!

Sources

- Outdoors: burning fossil fuels, such as gas and oil transport, industry, electricity generation.
- Indoors: human respiration.



CO₂ Icons



Good

CO₂ ≤ 700 ppm*
Ideal comfort level



Moderate

701 - 1,000 ppm
May experience odors



High

1,001 - 1,500 ppm
General drowsiness



Unhealthy

1,501 - 2,500 ppm
*Fatigue and reduced
concentration*



Very Unhealthy

2,501 - 5,000 ppm
*Headaches and adverse
health effects expected*



Hazardous

5,001 - 10,000 ppm
Quickened breathing, nausea

*Health effects valid for long term exposure
* ppm: Parts Per Million*

Air Quality Index (AQI)

Air Quality Index (AQI) is a system for reporting the severity of air quality levels in a way that is easy to understand.

The index ranges from 0 to 500, where higher index values indicate higher levels of air pollution.



Good
0 - 50
Little to no health risk



Moderate
51 - 100
Sensitive individuals may experience irritations



Unhealthy for Sensitive Groups**
101 - 150
Sensitive groups should limit outdoor exertion



Unhealthy
151 - 200
Harmful for sensitive groups, reduced outdoor activity for everyone



Very Unhealthy
201 - 300
Everyone can be affected. Avoid heavy outdoor activity



Hazardous
301+
Serious risks of respiratory effects. Everyone should avoid outdoor activities

** Following the US EPA Standards for Particle Pollution to calculate AQI*

***Sensitive groups include people with respiratory or heart disease, children and the elderly*

Air Quality Index (AQI) Icons



Process

It's totally easy only with those controls, AirVisual Pro can detect both of indoor and outdoor air quality that could be accessed both offline and online (application)

AirVisual Pro controls

Power / Sleeping Mode / Back



- Switch the AirVisual Pro on/off with a 3-second press
- Enter/exit the device's sleep mode with a quick press
- Go back in the menu settings with a quick press

Menu / OK



- Access your AirVisual Pro's menu and settings
- Make selections in the menu

Up / Down / Left / Right



- Navigate through your AirVisual Pro's settings
- Navigate between slideshow screens



Care and Maintenance

DO



Put the AirVisual Pro on a flat, stable surface



Clean the AirVisual Pro using a slightly damp cloth



Connect the AirVisual Pro to an electrical outlet



Extend the sensor's lifetime by using power saving mode

DON'T



Expose to direct sunlight (even indoors)



Expose to water (e.g. rain)
The AirVisual Pro is not waterproof



Expose to strong wind



Expose to extreme heat (e.g. don't place on a heater)

Other advantages of using AirVisual Pro

Recommendations screen

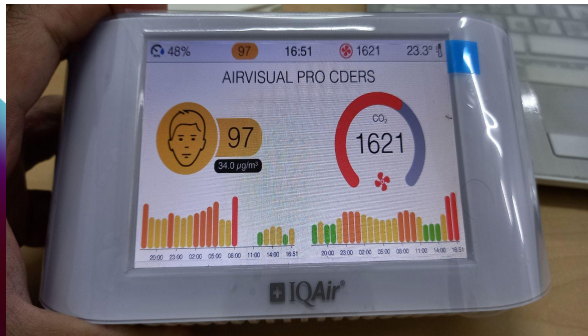
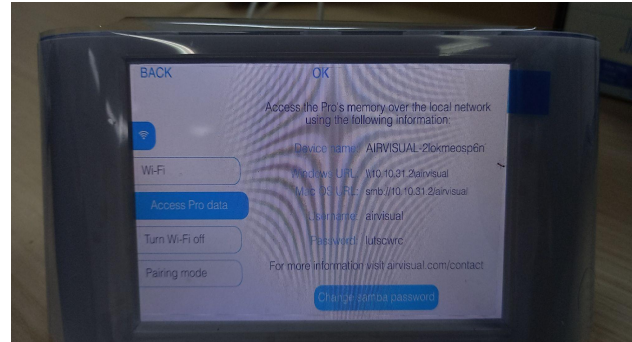
The recommendations screen provides practical insights to help optimize your health and comfort.



Identify Indoor Air Quality

Indoor Air Quality Data
PM 2.5
CO2 Concentration
Temperature
Humidity

Tool Installation Documentation



Application of Tools



4-in-1 Gas Monitor

SMART SENSOR

Author

ENVIRONMENTAL ENGINEERING - PRESIDENT UNIVERSITY



Why is it important?



Used as an essential part of safety equipment, gas detectors can detect oxygen deficiency, explosive atmospheres and multiple poisonous gases, thus removing threats from hazardous and potentially lethal environments.

Specification



- Portable and capable to use continuously for monitoring
- Sensor four different gas

Sensor Specification		
Gas	Range	Resolution
CO	0-999ppm	1 ppm
H2S	0-500ppm	1 ppm
O2	0-30%	0.1%
LEL	0-100%	1%

Easy to Use

Mode Available:

- Depress 1x: “Peak Value”
- Depress 2x: “Time Weighted Average (TWA)”, *only for toxic sensor and set for 8 hours
- Depress 3x: “Short Term Exposure Limit (STEL)”, *only for toxic sensor and set for 15 mins
- Depress 2 sec for Alarm Set Point



Turn on: Press button over 2 seconds

The real time monitor of four gases will work without stop.

Another function:

- Gas Calibration mode
- > easily setting with up and down button
- > and “←” confirm

Maintenance

- Use soft and clean cloth to wipe the outside surface
- Never use any solvents/cleaning solutions
- To clean the sensor opening please use the clean, soft brush

Charging

- The battery suggested to be fully charged before using the tool
- The shaded area of the battery indicator shows full once the battery is fully charged
- Should be fully charged within 6 hours